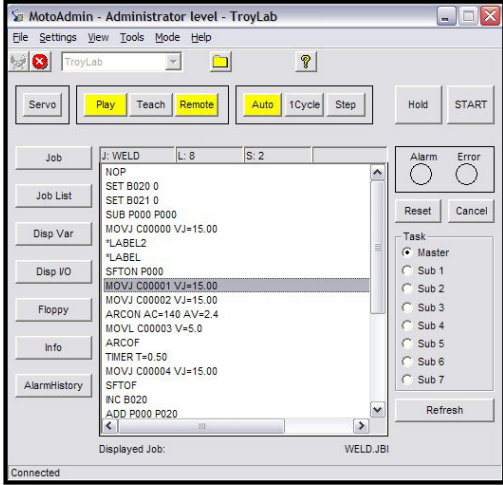


MotoAdmin



REMOTE COMMUNICATION

MotoAdmin is a software package designed to allow a user to connect a PC to a robot controller and remotely view and manipulate robot data.

Using MotoAdmin, the user can upload/download/view jobs, variables and I/O. Jobs can be started and stopped, and robot modes can be monitored. Programmed jobs can be changed only with the supervisory password. Alarm history can also be downloaded and viewed.

HIGHLIGHTS

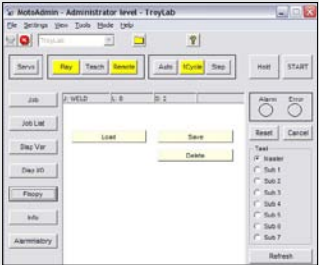
Features

- Start, stop and hold robot jobs.
- Upload/download robot jobs and variable data.
- Define and save robot settings for easy connection.
- Monitor status.
- See alarm history.
- Reset/cancel robot alarms.
- Three levels of password protection.

ARM YOURSELF...

...with Motoman Robotics' MotoAdmin software to manage your Motoman robot system.

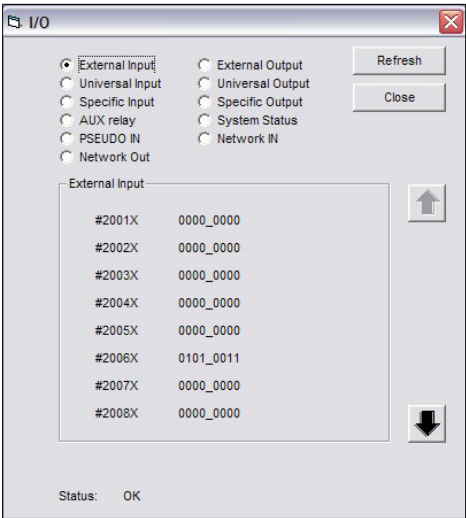
SCREENS



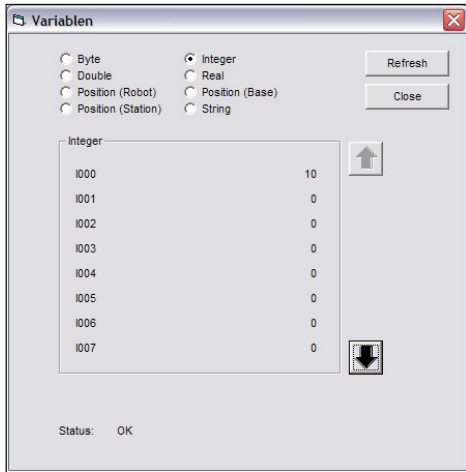
ROBOT INFORMATION



FILE COMMUNICATION



I/O DISPLAY



VARIABLE DISPLAY

TOP 3 REASONS TO BUY!

- Ability to easily check status of robot through network connection
- Secure remote control of robotic system
- Back up robot programs and data remotely

MINIMUM SYSTEM REQUIREMENTS

- Windows® XP
- 1.4 MHz Processor

COMPATIBILITY

- DX100 controller
- NX100 controller
- XRC controller



1300 552 333
www.ragroup.com.au