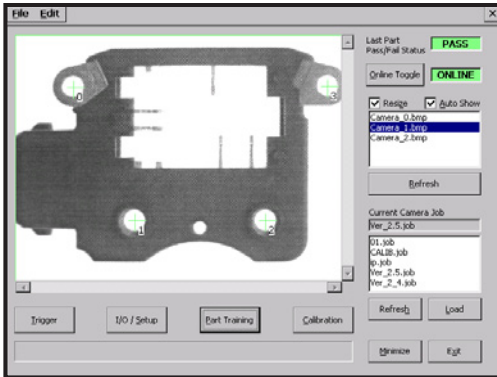


MotoSight 2D

2D VISION SOLUTION



MotoSight™ 2D EasyBuilder® Edition is a hardware and software solution that quickly adds vision functionality to your application. Featuring a Cognex In-Sight® Micro camera and Yaskawa Motoman's Pendant Vision application software, MotoSight 2D is a powerful solution used to solve 2D vision applications.

HIGHLIGHTS



Pendant Features

- Monitor and change on-line camera status.
- Display pass/fail status.
- Auto display most recent camera image.
- Display graphic overlays on captured images.
- Calibrate camera using pendant.
- Supports multiple vision systems.

Communication

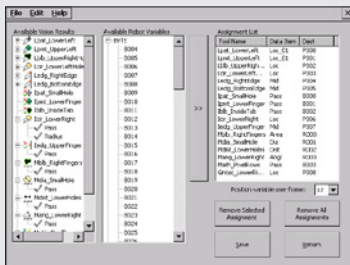
- DX100 and FS100 controllers communicate directly with the Cognex In-Sight camera over Ethernet.

Vision Features:

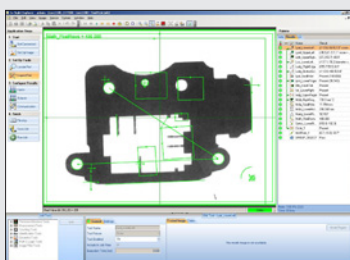
- 1050 In-Sight Micro IMAGE Sensor (default vision system supplied)
 - 1/3-inch CCD
 - 640 x 480 VGA
 - 60 frames per second
 - Lens type CS-mount and C-mount (with 5 mm extension, included)
- EasyBuilder is for customizing vision applications.
- Area-based search, boundary-based PatFind®, image processing, blob, edge, histogram, standard mathematical and string handling functions.
- Advanced option includes a vision operator interface to view images from the camera system.
- World's smallest smart camera.
- Less light sensitivity versus other threshold level sensors.
- High-res cameras also available.

COMPATIBILITY:

- In-Sight Micro 1050, 1100 series and 1400 series
- In-Sight 5000 series
- DX100 and FS100 controllers
- In-Sight Explorer EasyBuilder version 4.3.5



ASSIGNMENTS



COGNEX IN-SIGHT EXPLORER EASYBUILDER

TOP 3 REASONS TO BUY!

- Easy-to-integrate vision solution
- Adds flexibility to robot applications
- Reduces cost of expensive tooling for locating parts

NOTE: EtherNet/IP PCI board option is not available when using MotoSight 2D.
If EtherNet/IP communication is required, MotoEIP EtherNet/IP Adapter (slave), should be used.