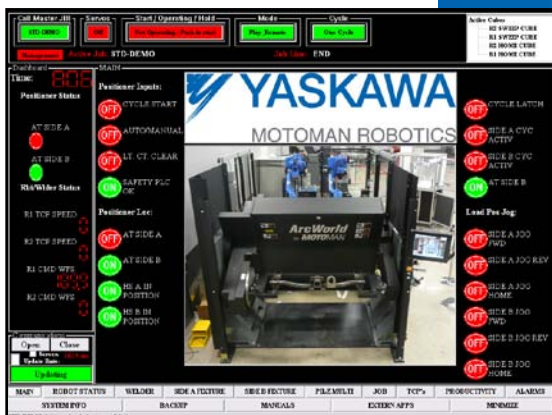


# PC-HMI

## PC-BASED HUMAN MACHINE INTERFACE



PC-HMI is a cost-effective PC-based user interface developed by Motoman Robotics that provides a customizable option for customer user interface needs. The PC-HMI allows users to easily configure and customize the screens and information on the HMI. The configurations are achieved without a need for costly development software. A text editable file is used for screen configuration and customization. The advantage of using a PC as the HMI is the ability to run applications to interact with your company's information technologies.

## HIGHLIGHTS

### Display Features

- 15" color touch screen display
- Embedded XP operating system
- Operating system "Locking" for protection
- Ethernet connectivity
- Intranet/internet connectivity
- USB-A port
- Simple text file to configure
- IP-34 enclosure
- 22 lbs total weight
- Standard 4-hole mounting
- Mount to guarding with arm structure for flexibility in location of display

### Screens Supplied

- Dashboard: Customizable window is always present and always active.
- Main Screen: Overview of whole system status.
- Robot(s) Screen: Provides the status of the robot(s).

- Job Screen: Displays current jobs.
- Productivity Screen: Shows statistical data of the system.
- Alarms Screen: Shows alarm events so the operator can diagnose and then resolve problems quickly.
- System Info Screen: Provides basic informational status of the system.
- Backup Screen: Provides a backup of files from the controller to the PC-HMI or to a network drive.
- Manuals Screen: Allows users access to local or networked manuals, drawings, or reports.
- External Apps: Provides access to other applications or tools loaded on the HMI.

### Screens Supplied with an ArcWorld® System

- Positioner Screen: Provides information regarding the location of the positioner.
- Welder Screen: Shows power source related status.
- Touch Up: This application provides users the ability to populate the pictures of their parts with weld locations. Operators can highlight a weld location and enter a weld offset amount. Offsets are temporary, limited in range and password protected.

### ARM YOURSELF

...with Motoman Robotics' PC-HMI to provide your user interface needs along with the ability to interact with your plant information technologies.

## TOP 3 REASONS TO BUY!

- Ideal for applications requiring a user and PC-based HMI
- Cost-effective HMI for robot centric applications
- Customizable for your specific application requirements



PRODUCTIVITY – OEE SCREEN



ROBOT STATUS

