

YASKAWA

MOTOMAN MS100 II

Spot Welding with the MS-series



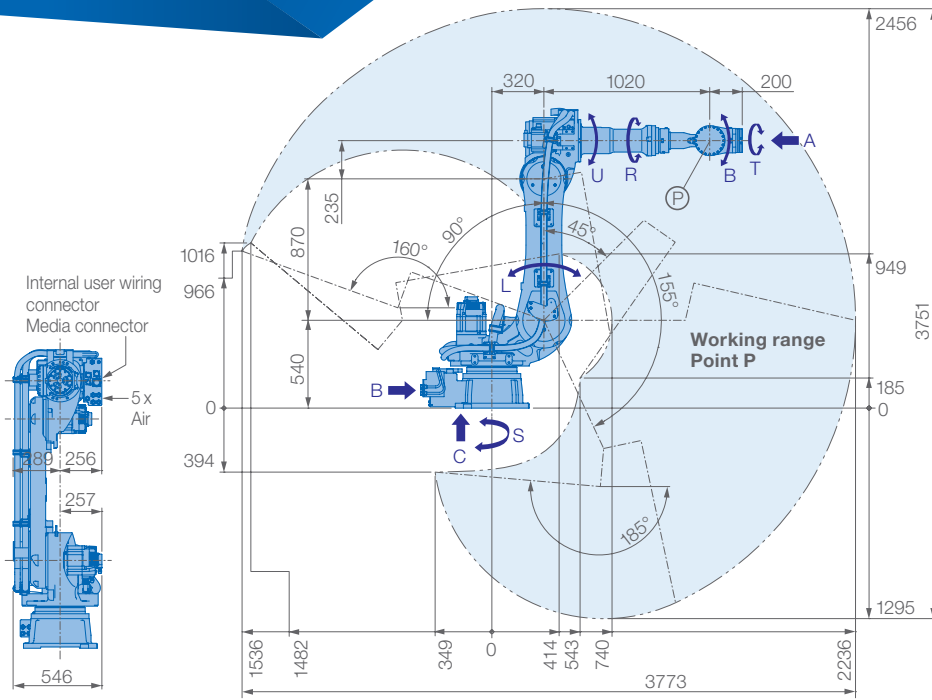
The 6-axis MOTOMAN MS100 II is a versatile robot offering superior performance in spot welding applications.

Despite its wide motion range this robot requires minimal footprint and its streamlined design enables a high payload of 100 kg. In addition the MOTOMAN MS100 II is optional available with external cables for flexible mounting of small and middle-sized spot welding guns, with only little limiting its motion range. Installing a compact spot welding gun and routing cables close to the robots arm allow placing the robot nearby the work piece. So the MOTOMAN MS100 II is able to work perfectly together with other robots in confined spaces.

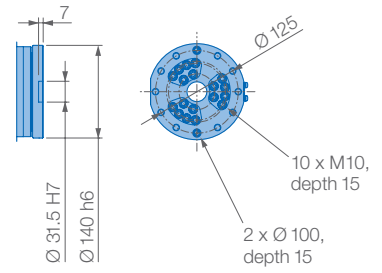
The MOTOMAN MS100 II is available with the optional Category 3 Functional Safety Unit (FSU), which allows an establishment of 32 safety units and up to 16 tools.

KEY BENEFITS

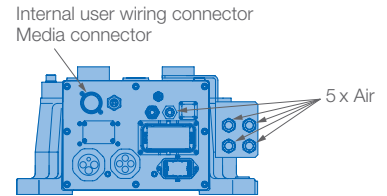
- Wide motion range: 2236 mm
- High payload: 100 kg
- Maximum performance using minimal floor space
- Optional with media hose package for mounting spot welding guns
- Enhanced safety functions (optional)



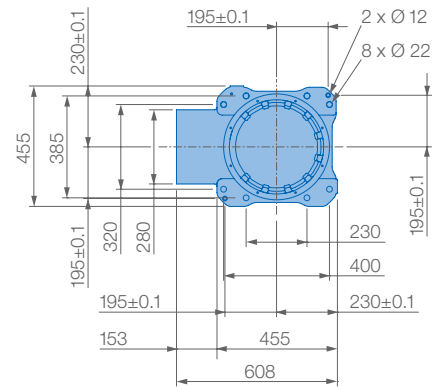
View A



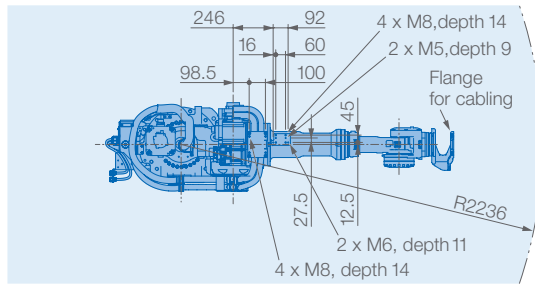
View B



View C

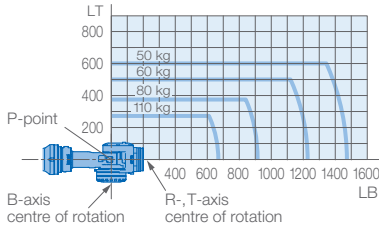


Mounting option: Floor
Protection class: IP54/67

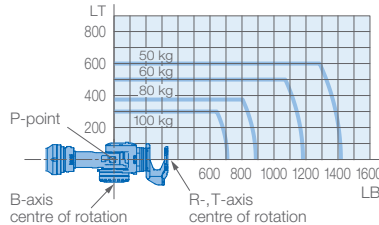


Allowable wrist load

without flange



with flange



Specifications MS100 II											
Axes	Maximum motion range [°]		Maximum speed [°/sec.]		Allowable moment [Nm]		Allowable moment of inertia [kg · m ²]		Flange		
	without	with*	without	with	without	with	without	with	without	with	
S	±180		140		-		-		Controlled axes		
L	+155/-90		110		-		-		Max. payload [kg]		
U	+160/-185		130		-		-		110	100	
R	±360	±205	175		721	696	60.0	58.0	Repeatability [mm]		
B	±125	±120	175		721	696	60.0	58.0	Max. working range R [mm]		
T	±360	±180	255		294		33.7	33.0	Temperature [°C]		
										Humidity [%]	
										Weight [kg]	
										Power supply, average [KVA]	
										0 to +40	
										20 - 80	
										625	
										5.0	

* Recommended values

