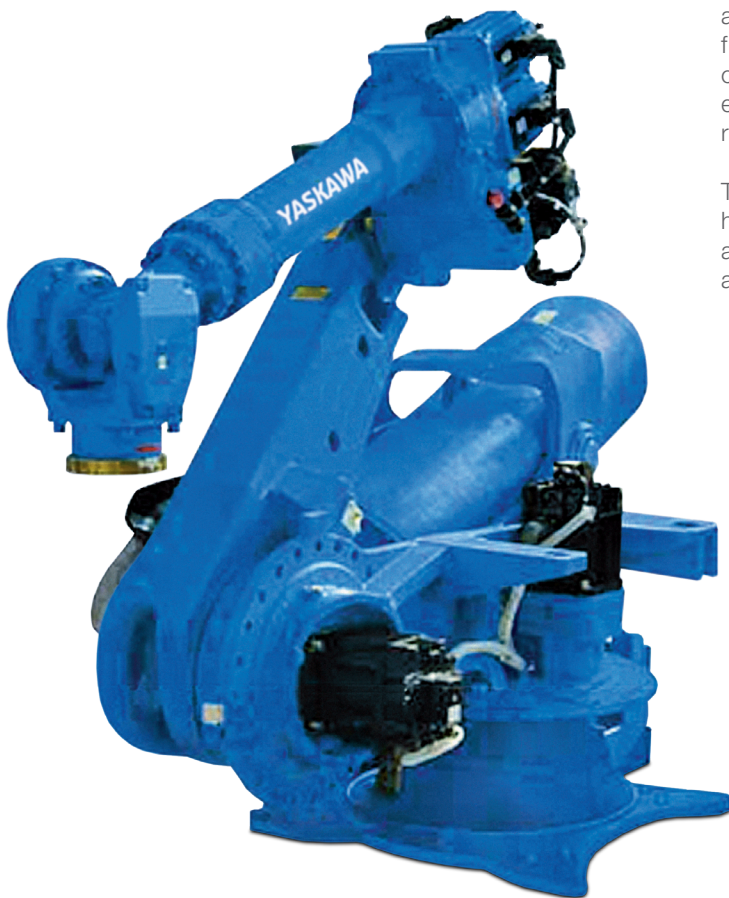


MOTOMAN ES165RD II / ES200RD II

Spot Welding, Handling & General Applications
with the ES-series

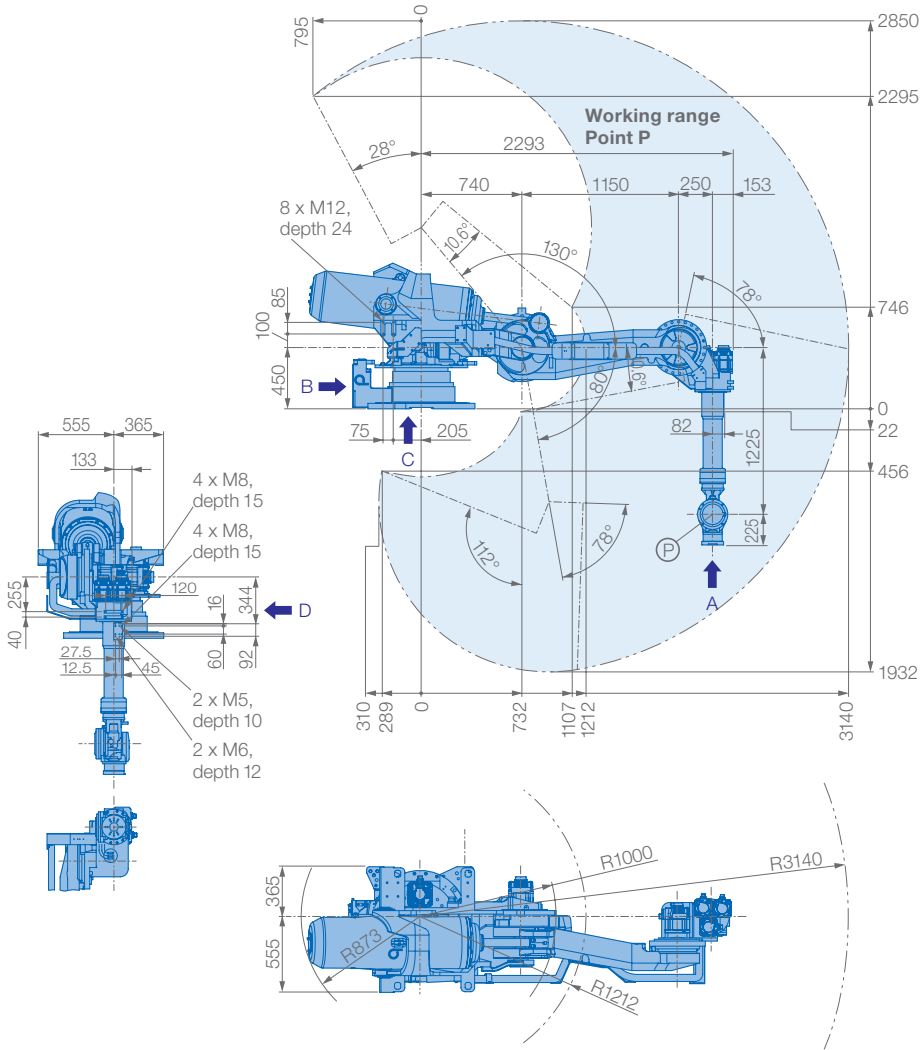


The flexible MOTOMAN ES165RD II/ES200RD II is a 6-axis shelfmounted robot. It offers high productivity, reliability and maximum performance in the areas of handling, machine tending and press brake tending. Being shelf-mounted, it is able to unload work pieces from above. This saves precious floor space and ensures that the space required for tool changing is kept free. Furthermore, the internal cable routing extends the service life of the robots, increases safety and reduces cycle times.

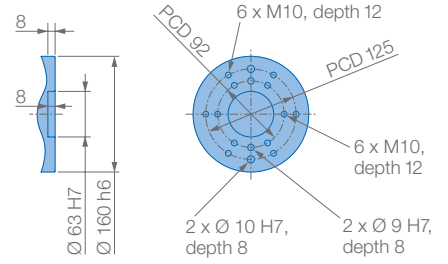
The MOTOMAN ES165RD II/ES200RD II is controlled by the highperformance MOTOMAN DX200 controller. This is available with the optional Functional Safety Unit (FSU) that offers a wide range of new safety functions.

KEY BENEFITS

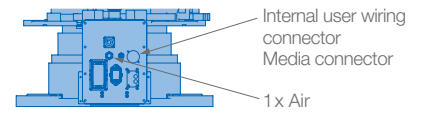
- Fast, flexible and powerful
- Streamlined design for minimal space requirements
- Shelf-mounted:
 - Working range extended
 - Simple gripping of components
- Possibility of mounting on machine
- Longer service life of the dress package due to internal routing of the cables through the upper arm of the robot
- Improved welding quality due to integrated control system for servomotor-driven spot welding guns



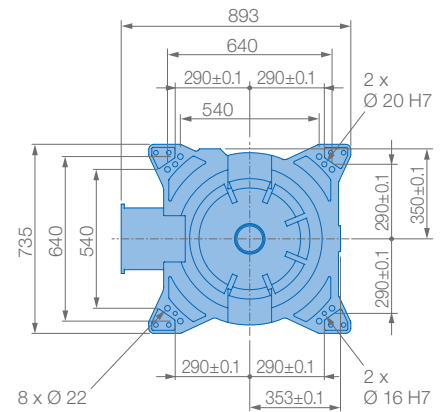
View A



View B

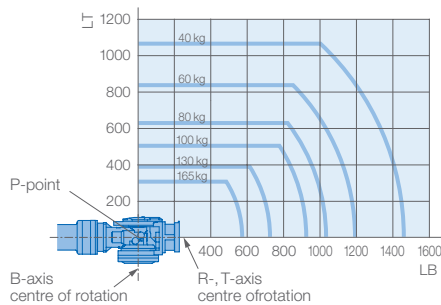


View C

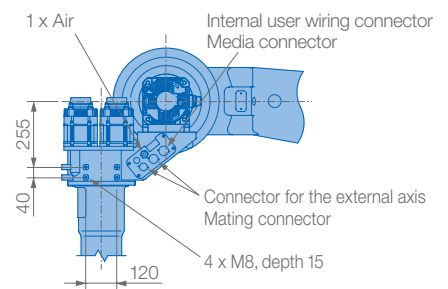


Mounting options: Floor
Protection class: IP54/67

Allowable wrist load

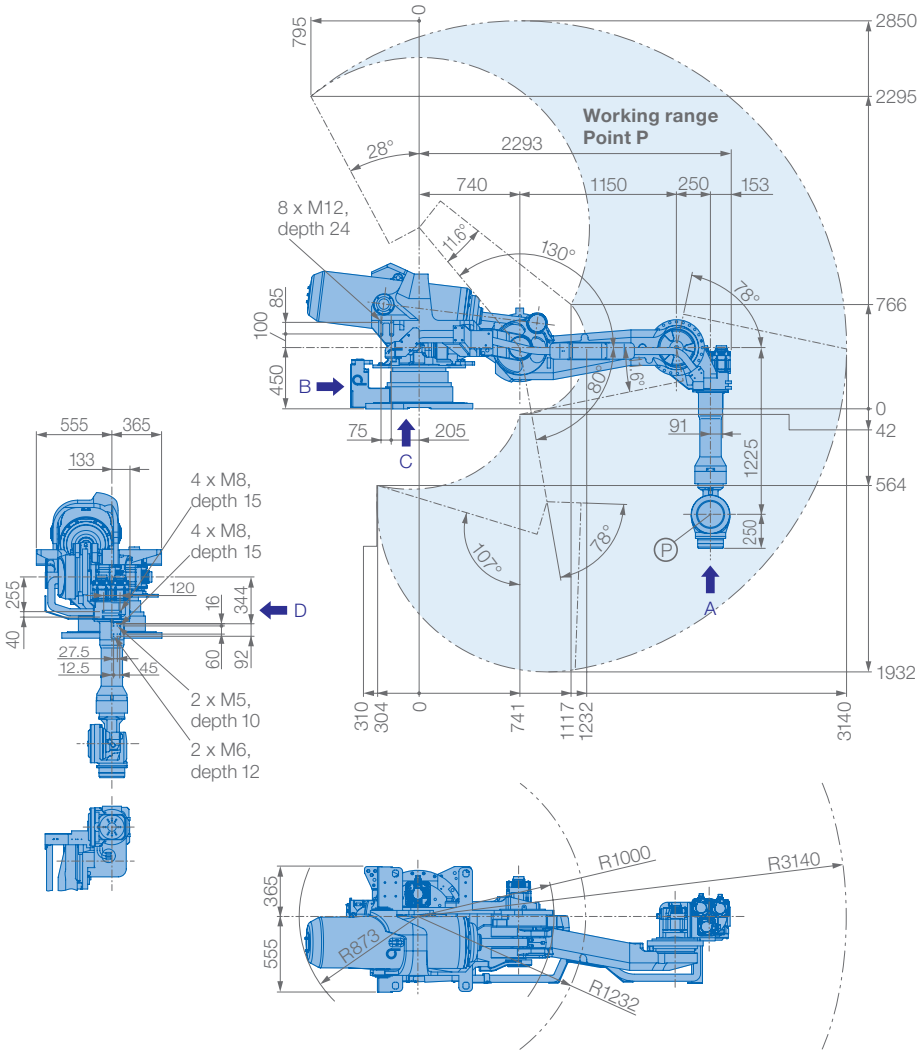


View D

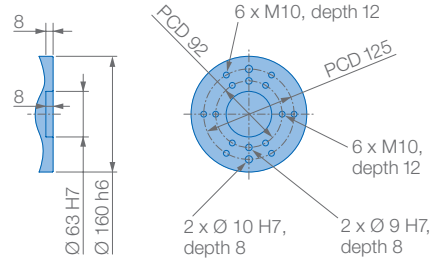


Specifications ES165RD II

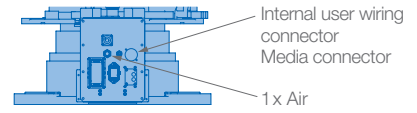
| Axes | Maximum motion range [°] | Maximum speed [°/sec.] | Allowable moment [Nm] | Allowable moment of inertia [kg · m ²] | Controlled axes | 6 |
|------|--------------------------|------------------------|-----------------------|--|-----------------------------|----------|
| S | ±180 | 105 | - | - | Max. payload [kg] | 165 |
| L | +80/-130 | 105 | - | - | Repeatability [mm] | ±0.2 |
| U | +208/-112 | 105 | - | - | Max. working range R [mm] | 3140 |
| R | ±360 | 175 | 921 | 85 | Temperature [°C] | 0 to +45 |
| B | ±130 | 150 | 921 | 85 | Humidity [%] | 20 - 80 |
| T | ±360 | 240 | 490 | 45 | Weight [kg] | 1730 |
| | | | | | Power supply, average [KVA] | 5.0 |



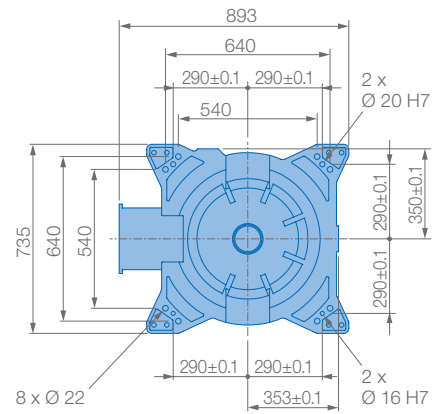
View A



View B

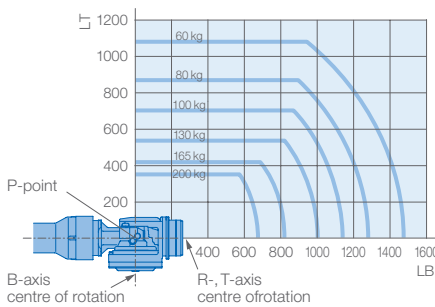


View C

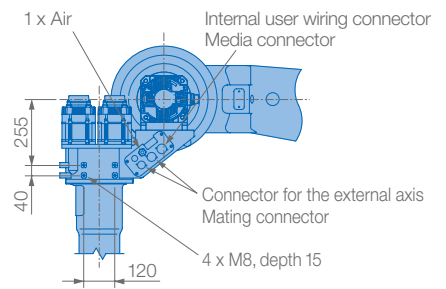


Mounting options: Floor
Protection class: IP54/67

Allowable wrist load



View D



| Specifications ES200RD II | | | | | | |
|---------------------------|--------------------------|------------------------|-----------------------|--|-----------------------------|----------|
| Axes | Maximum motion range [°] | Maximum speed [°/sec.] | Allowable moment [Nm] | Allowable moment of inertia [kg · m ²] | Controlled axes | 6 |
| S | ±180 | 90 | - | - | Max. payload [kg] | 200 |
| L | +80/-130 | 85 | - | - | Repeatability [mm] | ±0.2 |
| U | +208/-107 | 85 | - | - | Max. working range R [mm] | 3140 |
| R | ±360 | 120 | 1344 | 143 | Temperature [°C] | 0 to +45 |
| B | ±125 | 120 | 1344 | 143 | Humidity [%] | 20 – 80 |
| T | ±360 | 190 | 717 | 80 | Weight [kg] | 1800 |
| | | | | | Power supply, average [KVA] | 5.0 |

YASKAWA Headquarters

YASKAWA Europe GmbH
Robotics Division
Yaskawastraße 1
85391 Allershausen, Germany
Tel. +49 (0) 8166/90-0
Fax +49 (0) 8166/90-103

YASKAWA ACADEMY and sales office Frankfurt

YASKAWA Europe GmbH
Robotics Division
Hauptstraße 185
65760 Eschborn, Germany
Tel. +49 (0) 6196/77725-0
Fax +49 (0) 6196/77725-39

YASKAWA GROUP

AT YASKAWA Austria
Schwechat/Wien
+43(0)1-707-9324-15

CZ YASKAWA Czech s.r.o.
Rudná u Prahy
+420-257-941-718

ES YASKAWA Ibérica, S.L.
Gavà/Barcelona
+34-93-6303478

FR YASKAWA France SARL
Saint-Aignan-de-Grand-Lieu
+33-2-40131919

FI YASKAWA Finland Oy
Turku +358-(0)-403000600

GB YASKAWA UK Ltd.
Banbury +44-1295-272755

IT YASKAWA Italia s.r.l.
Torino +39-011-9005833

IL YASKAWA Europe Technology Ltd.
Rosh Ha'ayin +972-3-9004114

NL YASKAWA Benelux B.V.
Son +31-40-2895500

PL YASKAWA Polska Sp. z o.o.
Wrocław +48-71-7928670

RU YASKAWA Nordic AB
Moskva +46-480-417-800

SE YASKAWA Nordic AB
Torsås +46-480-417-800

SI YASKAWA Slovenia
Ribnica +386-1-8372-410

TR YASKAWA Turkey Elektrik
Ticaret Ltd. Sti.
İstanbul +90-216-5273450

ZA YASKAWA Southern Africa (PTY) Ltd
Johannesburg +27-11-6083182

DISTRIBUTORS

BG ARAMET ROBOTICS Ltd.
Yambol +359-885 317 294
Kammarton Bulgaria Ltd.
Sofia +359-02-926-6060

CH Messer Eutectic Castolin
Switzerland S.A.
Dällikon +41-44-847-17-17

DK Robotcenter Danmark
Løsning +45 7022 2477

EE RKR Seadmed OÜ
Tallinn/Estonia +372-68-35-235

GR Gizelis Robotics
Nea Kifissia +30-2106251455

HU Flexman Robotics Kft
Budapest +36-30-9510065

LT Profibus UAB
Panevezys +370-45-518575

NO Skala Robotech AS
Lierstranda +47-32240600

PT ROBOPLAN Lda
Aveiro +351-234 943 900

RO Sam Robotics srl
Timisoara +40-720-279-866
MPL Automation S.R.L.
Satu Mare +40 (0) 261 750 741

